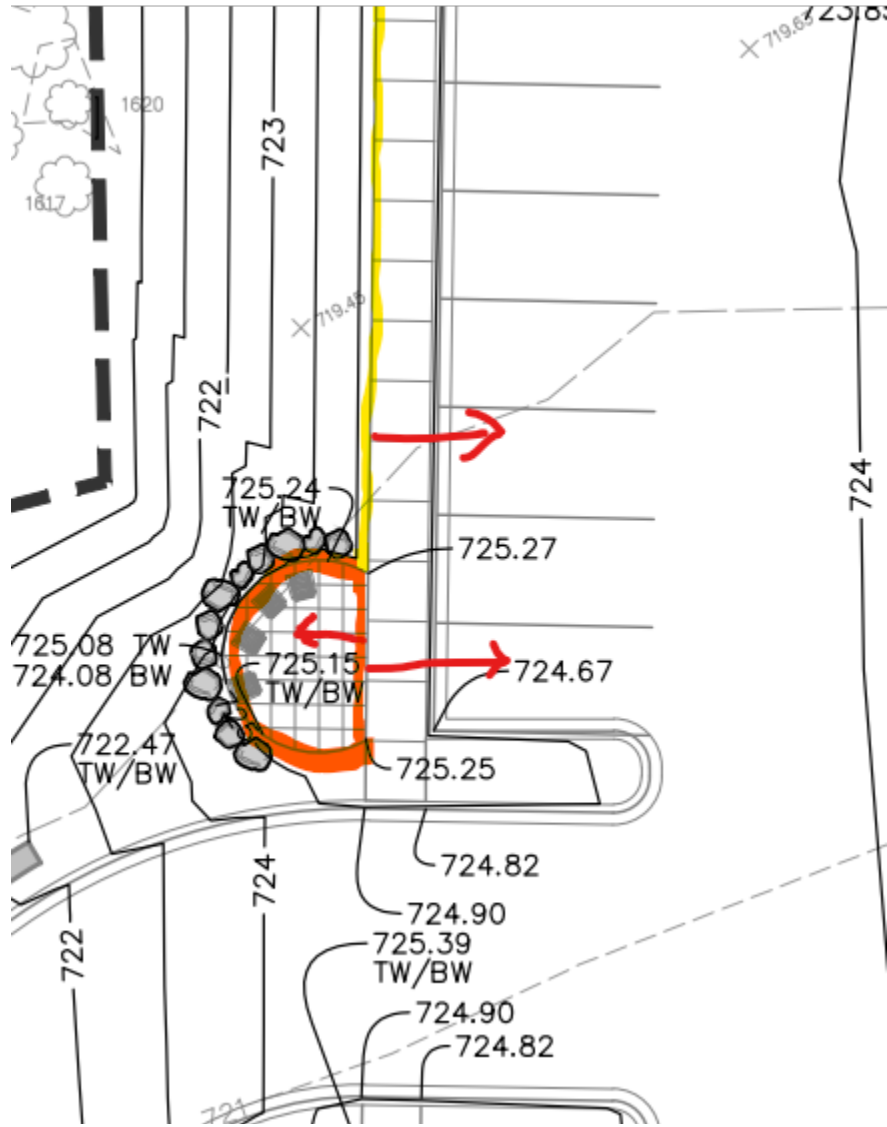


HUD's review of C3.0 Grading Plan they saw a small area that was draining back toward the Wetlands that I have highlighted in orange. They can either lift this up so that there is positive drainage to the curb or put in a pervious surface in this area to ensure no runoff was going directly to the wetlands. Once you have that drawing, I will gladly review it for you.



HUD reviewed and approved the civil drawing changes.

